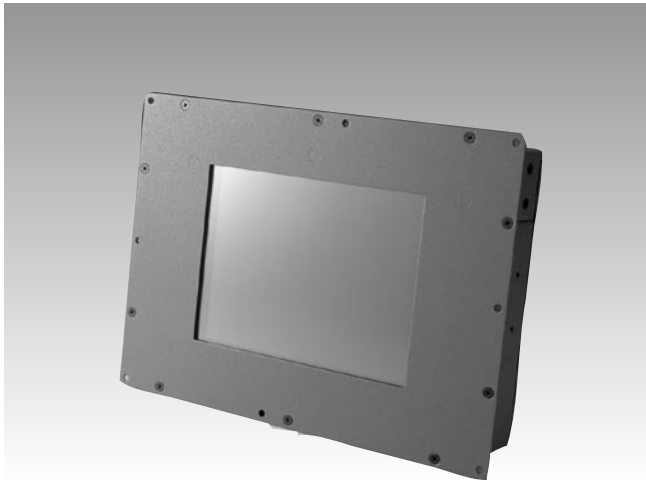


SPC-65C

6.4" Facility Control Panel



Features

- Intel XScale® PXA270 CPU and Microsoft Windows® CE 5.0
- 6.4" color TFT LCD panel and resistive touchscreen
- Compact size with COM, USB, LAN, CF, and audio interfaces
- IP65 front bezel
- Open-frame model: ideal design for inside-out mounting
- Adobe® Flash Player & Java Virtual Machine (JVM) as options

Introduction

The SPC-65C integrates the Intel XScale PXA270 CPU and Windows CE 5.0. It is designed to provide customers with a low power, high performance embedded display platform with good networking and graphic performance. SPC-65C has a bright VGA (640 x 480) LCD screen and comes without front bezel for inside-out mounting, making it ideal for customers to design their own chassis or housing. SPC series supports Adobe Flash Player and Java Virtual Machine (JVM) by project base. Colorful GUIs are easy to develop using Adobe Flash and Java.

Specifications

System Kernel

- **CPU** Intel PXA270 312 MHz (520 MHz as option)
- **OS** WinCE 5.0 core Eng. version
- **SDRAM** 64 MB
- **Boot Flash** 1 MB NOR flash for bootloader
- **Storage Flash** 128 MB for image and customer AP
- **WDT** PXA270 Internal
- **RTC** HT1381 backup by 65 mAh rechargeable coin battery

Display

- **LCD** 6.4" Primeview 18-bit TFT 640 x 480
- **Touchscreen** Resistive type
- **Graphics Chip** PXA270 internal

I/O

- **COM** COM1: RS-232 by DB-9 conn.
COM2: RS-485/232/422 by Phoenix conn. default is RS-485. (S/W configurable)
- **Ethernet** 1 x 10/100Base-T by RJ-45
- **USB** 1 x USB 1.1 host by type A conn.
- **SD/MMC** 1 x standard slot (support memory and I/O mode)
- **CompactFlash** 1 x type II slot (support memory and I/O mode)
- **Audio** Mic-in, Line-in, Line-out & Speaker-out by expansion conn.
- **Expansion Conn.** 50-pin box headers with: SMBus, Mic-in, Line-in, Line-out, 2-wires RS-232, 1 x USB 1.1 host, 4 x TTL-level DI, 4 x TTL-level DO

Power

- **DC Input** 10 ~ 28 V DC with internal fuse protection via Phoenix conn.
- **Power Switch** Slide type
- **Power Consumption** 6 W (normal mode w/o peripherals connected)
- **Power Management** Support normal mode and idle mode (turns off the LCD power system)

Mechanical

- **Material** Front bezel is aluminum, others are made from SPCC
- **Mounting** Inside-out panel mount

Environmental

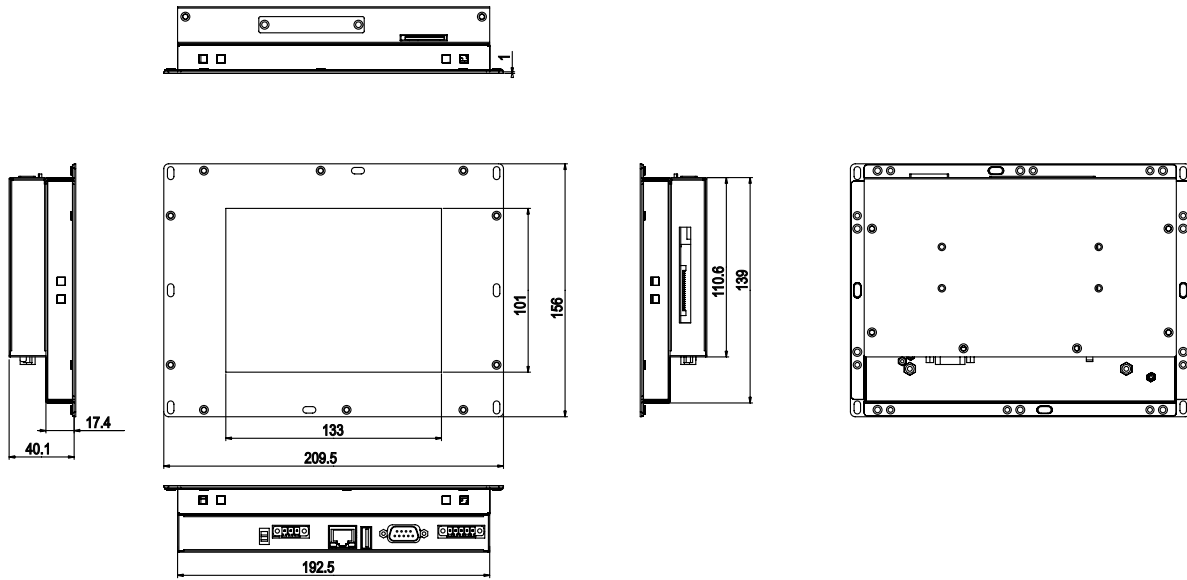
- **Operating Temp** 0 ~ 50° C
- **Storage Temp** -20 ~ 60° C
- **Water/Dust Resistance** IP65 front bezel
- **Certifications** CE/FCC/UL

GUI Firmware

- **Adobe Flash Player 7.0 support (project base)**
- **Java Virtual Machine support (project base)**

Dimensions

Unit: mm



Ordering Information

Part Number	Description
SPC-65C-347CE1E	Intel Xscale PXA270 312MHz CPU, Windows CE .NET pre-installed with 6.4" color TFT LCD and resistive touchscreen with open frame architecture
SPC-POWERSET	60 W power adapter with 3-pin power connector (A power cord must be purchased separately)

Packing List

Description	Quantity
SPC-65C	1
Windows CE 5.0 end user license agreement (Windows CE 5.0 version)	1
CD-ROM 1) Readme.txt, User Manual, and Datasheet 2) Upgrade utility 3) Windows CE platforms SDK (Windows CE 5.0)	1
Warranty Card	1
3-pin power connector	1

I/O Diagram

