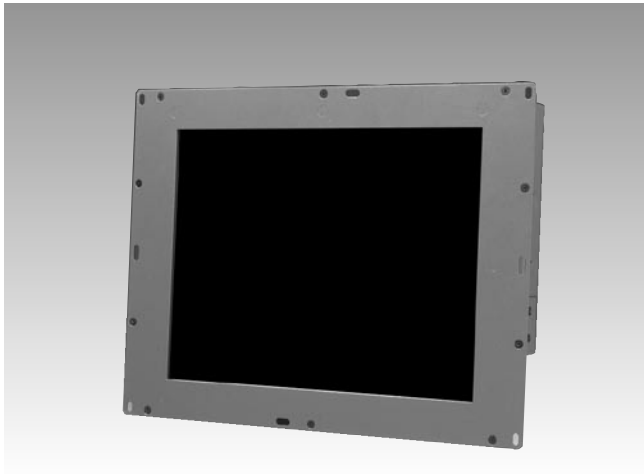


SPC-101C

10.4" Facility Control Panel



Features

- Intel XScale® PXA270 CPU and Microsoft Windows® CE 5.0
- 10.4" TFT LCD Panel with 4-wire resistive touchscreen
- Built-in Intel 2700G graphics chip with 32 MB VRAM for great media performance
- Comprehensive I/O with Ethernet, USB, RS-232, and audio interfaces
- Open-frame model: ideal design for inside-out mounting
- IP65 approved front bezel
- Adobe® Flash Player & Java Virtual Machine (JVM) as options
- Software configurable RS-485/422/232 port

Introduction

The SPC-101C integrates the Intel XScale PXA270 CPU and Windows CE 5.0. It is designed to provide customers with an embedded display platform with high computing power and good graphic performance. The SPC-101C integrates the Intel 2700G graphics chip that supports MPEG-4 @ 30 frames per second to provide good graphic capabilities for interactive media applications. SPC series supports Adobe Flash Player and Java Virtual Machine (JVM) by project base. Colorful GUIs are easy to develop using Adobe Flash and Java.

Specifications

System Kernel

- **CPU** Intel PXA270 312 MHz (520 MHz as option)
- **OS** WinCE 5.0 professional plus Eng. version
- **SDRAM** 64 MB (128 MB)
- **Flash** 128 MB (256 MB as option)
- **WDT** PXA270 internal
- **Boot Loader** 1 MB AMD Flash ROM for boot loader
- **RTC** HT1381, backup by internal 65 mAh rechargeable coin battery

Display

- **LCD** 10.4" AUO 18-bit TFT LCD SVGA
- **Touchscreen** 4-wire resistive
- **Graphics Chip** Intel 2700G with 32 MB VRAM

I/O

- **COM** COM1: RS-232 by DB-9 conn.
COM2: RS-485/232/422 by Phoenix conn., default is RS-485. (S/W configurable)
- **LAN** 1 x 10/100Base-T by RJ-45
- **USB** 2 x USB 1.1 host by type A conn.
- **SD/MMC** 1 x standard slot (support memory and I/O mode)
- **Audio** Line-out by phone jack
- **Expansion Conn.** 50-pin box headers with: SMBus, Mic-in, line-in, line-out, 2-wire RS-232, 1 x USB 1.1 host, 4 x TTL-level DI, 4 x TTL-level DO

Power

- **DC Input** 10 ~ 28 V DC with internal fuse protection via Phoenix conn.
- **Power Consumption** 10.4 W (normal mode w/o peripherals connected)

Mechanical

- **Material** SPCC
- **Mounting** Inside-out open frame panel mount

Environment

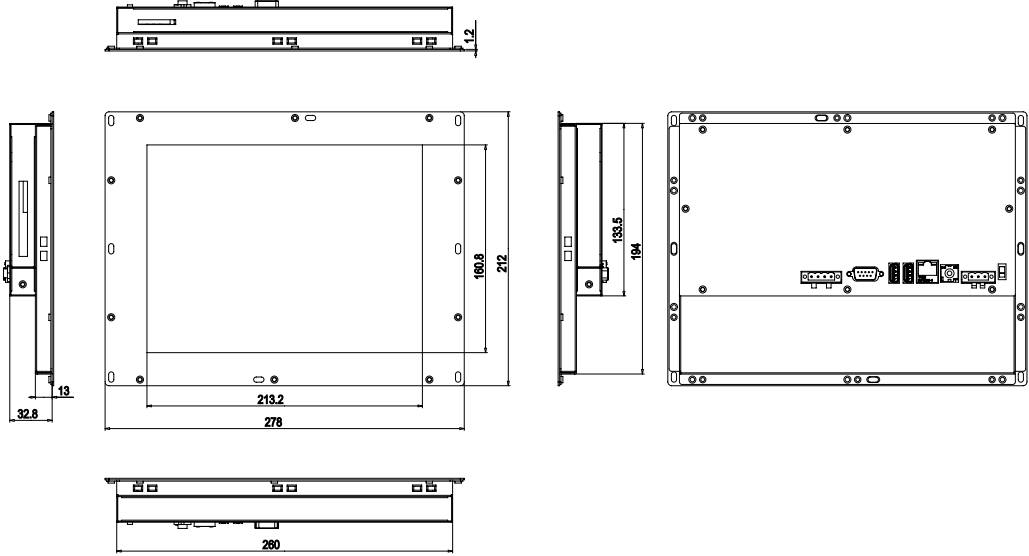
- **Operating Temp** 0 ~ 50° C
- **Storage Temp** -20 ~ 60° C
- **Water/Dust Resistance** IP65 front bezel
- **Certification** CE/FCC/UL

GUI firmware

- **Adobe Flash Player support (project base)**
- **Java Virtual Machine support (project base)**

Dimensions

Unit: mm



Ordering Information

Part Number	Description
SPC-101C-347CE1E	Intel XScale CPU PXA270 312 MHz with 2700G graphics chip, Windows CE 5.0 core version pre-installed, 10.4" color TFT LCD, and resistive touchscreen with an open frame architecture.
SPC-POWERSSET	60 W power adapter with 3-pin power connector (A power cord must be purchased separately)

Packing List

Description	Quantity
SPC-101C	1
Windows CE 5.0 end user license agreement (for Windows CE 5.0 version)	1
CD-ROM 1) Readme.txt, User Manual and Datasheet 2) Upgrade utility 3) Windows CE 5.0 platforms SDK (Windows CE 5.0)	1
Warranty Card	1
3-pin power connector	1

I/O Diagram

