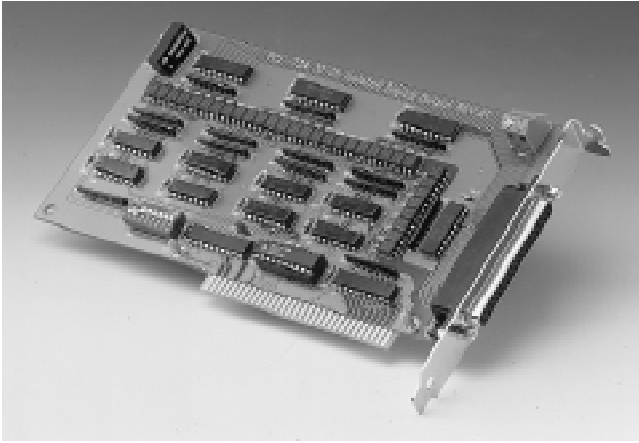


# PCL-734 32-channel Isolated Digital Output Card



## Features

- 32 isolated digital output channels
- High output driving capacity
- High-voltage isolation on output channels (1000 V<sub>DC</sub>)
- D-type connectors for isolated output channels
- High sink current on isolated output channels (200 mA/channel)
- Integral suppression diodes for inductive loads
- Wide output range (5 ~ 40 V<sub>DC</sub>)

## Introduction

The PCL-734 has 32 isolated digital output channels, which provide 1000 volts of protection. Every 8 channels contain 8 darlington transistors with common emitters and integral suppression diodes for inductive loads. Each output channel corresponds to a bit in a PC I/O port, making the PCL-734 very easy to program.

## Applications

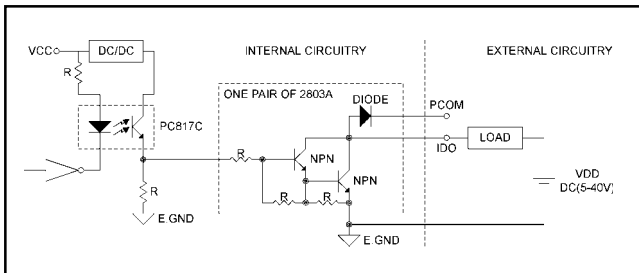
- Industrial On/Off control
- BCD interfacing
- Digital output control
- Industrial and lab automation

## Specifications

- **Output voltage:** Open collector 5 ~ 40 V<sub>DC</sub>
- **Sink current:** 200 mA max.
- **Isolation voltage:** 1000 V<sub>DC</sub>
- **Throughput:** 10 kHz max.

### General

- **Power consumption:** +5 V @ 330 mA (typical)  
+5 V @ 500 mA (max.)
- **Operating temperature:** 0 ~ +60° C (32 ~ 140° F)



Isolated Output Circuit Diagram

- **Storage temperature:** -20 ~ +70° C (-4 ~ 158° F)
- **Operating humidity:** 5 ~ 95% RH non-condensing (refer to IEC 68-2-3)
- **Connector:** 37-pin D-type female connector
- **Dimensions:** 185 mm (L) x 100 mm (H) (7.3" x 3.9")

## Pin Assignments

ID00	1	20	ID01
ID02	2	21	ID03
ID04	3	22	ID05
ID06	4	23	ID07
PCOM1	5	24	ID08
ID09	6	25	ID010
ID011	7	26	ID012
ID013	8	27	ID014
ID015	9	28	PCOM2
ID016	10	29	ID017
ID018	11	30	ID019
ID020	12	31	ID021
ID022	13	32	ID023
PCOM3	14	33	ID024
ID025	15	34	ID026
ID027	16	35	ID028
ID029	17	36	ID030
ID031	18	37	PCOM4
E.GND	19		

IDO: Isolated digital output  
PCOM: Common free wheeling diodes  
E.GND: External ground for isolated output

## Ordering Information

- PCL-734: 32-channel Isolated digital output card
- PCL-10137: DB-37 cable assembly, 1 m
- PCLD-880: Screw terminal board
- PCLS-OCX: ActiveX Control for data acquisition and control
- ADAM-3937: DB-37 Wiring terminal for DIN-rail mounting