

FWA-3620

Rackmount Internet Security Platform with 3 Front LAN Ports and Dual PCI Expansion Slots



Features

- 1U rackmount Internet security platform
- Socket 370 Intel® Pentium® III/Celeron® up to 1.26 GHz
- Dual 32-bit/33 MHz PCI expansion slots
- Three 10/100 Fast Ethernet ports
- Console port for local setting
- Hard drive mounting bracket for 3.5" drive

CE FCC

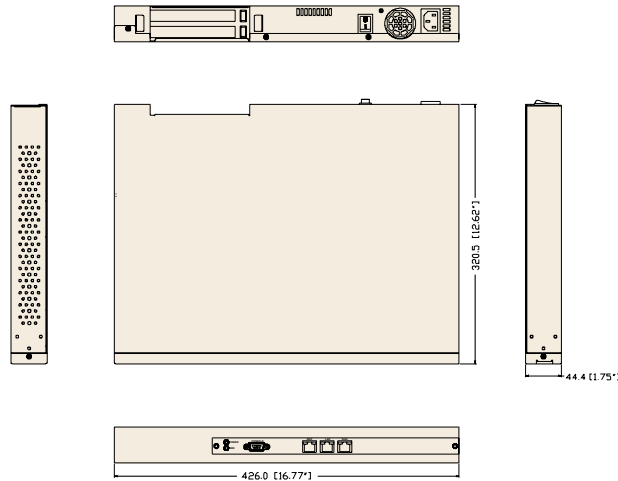
Introduction

Conceived as a powerful rackmount Internet security platform, the FWA-3620 is specifically designed for Internet secure connectivity. Designed with the Intel Pentium III and Celeron processor, it provides high performance and meets the requirements of Internet security appliances. The system supports CompactFlash for use in installing OS and Internet security applications. This avoids service disruption caused by hard disk mechanical/magnetic failures. In addition, the FWA-3620 can support system memory up to 512 MB SDRAM. Both CompactFlash and SDRAM can be accessed and replaced for software upgrades through an easily removable cover. Designed with the Plug-and-Serve concept in mind, the FWA-3620 offers three 10/100 Mbps auto-sensing Fast Ethernet ports in the front panel. There are two LED Indicators which monitor power and HDD activities. For easy access, the front panel has a 9-pin, RS-232 serial port for local system management, maintenance and diagnostics. The FWA-3620 has a place reserved for an optional 3.5" IDE HDD and dual PCI expansion slots. It is FCC and CE compliant.

Specifications

Processor System	CPU	Intel Pentium III	Intel Celeron
	Max. Speed	1.26 GHz	1.2 GHz
	L2 Cache	512/256KB	256/128 KB
	Chipset	Intel 815E	
	BIOS	Award 4 Mb Flash	
Memory	Technology	PC-133 SDRAM	
	Max. Capacity	512 MB	
	Socket	144-pin SO-DIMM	
Ethernet	Interface	10/100 Base-TX	
	Controller	Intel 82559ER x 3	
	Connector	RJ-45 x 3	
Drive Bay	3.5" HDD	1 (optional)	
Cooling	Blower	1 (3 CFM), 1 (4 CFM)	
Management	Console	RS-232 x 1	
Miscellaneous	Control	Power switch	
	Indicators	2 LED indicators for Power/HDD	
	CompactFlash Socket	1	
Adapter Power Requirement	Input	ATX PS, AC 90 ~ 264 V @ 47 ~ 63 Hz, full range	
	Output	180 W	
Environment	Temperature	Operating 0 ~ 40 °C (32 ~ 104 °F)	Non-Operating -20 ~ 75 °C (-4 ~ 167 °F)
	Humidity	5 ~ 85 % @ 40 °C (104 °F)	5 ~ 95 %
	Dimensions (W x H x D)	426 x 44 x 320 mm (16.8" x 1.7" x 12.6")	
Physical Characteristics	Weight	4.5 Kg (9.9 lb)	

Dimension Diagram



Unit: mm (inch)

Ordering Information

Part Number	Processor	LAN	Power Supply	PCI Slot	CompactFlash	SDRAM	HDD Drive
FWA-3620	--	3	180 W	2	--	--	--

Accessory Options (for system developers)

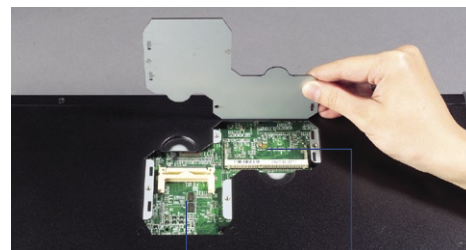
Part Number	Description
1703080101	Power cable wire 7P/Big 4P*2 10 cm
1703100260	USB cable
1700260250	Parallel cable: ASS'Y LPT port 25 cm 25P to 26P 2.0 mm
1700100250	Secondary cable: ASS'Y COM port 25 cm D-SUB 9P to 10P 2.0 mm
1703080160	PS/2 Y cable MINI DIN 16CM
1701160101	VGA cable: ASS'Y VGA 10 cm D-SUB 15P to 16P 2.0 mm
1701440350	Flat cable 44P 35 cm Gray IDC44P/IDC44P/IDC44P
1701440500	Flat cable 40P 50 cm Gray IDC40P/IDC40P/HOUSING44P
1700081401	Cable Ethernet cross over 8P to 8P 140 cm

Packing List

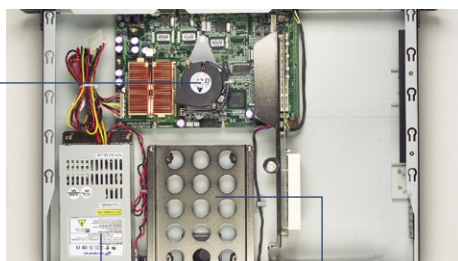
Part Number	Description
170144030A	IDE flat cable 40P
1701100306	Console cable
1961600000	CPU cooler



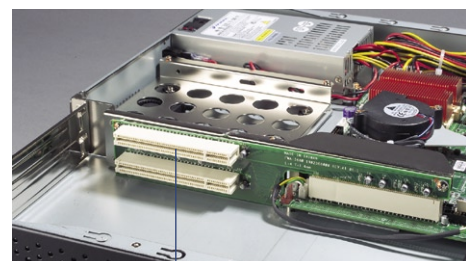
RS-232 console port Three LAN ports



CompactFlash socket SDRAM socket



Blower Power supply 3.5" IDE HDD space



Dual 32-bit/33 MHz PCI expansion slots

- Industrial Motherboards 1
- Industrial Motherboard Chassis 2
- PICMG Single Board Computers 3
- Industrial Computer Chassis 4
- Industrial Computer Peripherals 5
- 6U CompactPCI Enclosures 6
- 6U CompactPCI Boards 7
- 6U CompactPCI I/O 8
- 6U CompactPCI Accessories 9
- 3U CompactPCI Systems 10
- Internet Security Platforms 11
- Network Application Ready Platforms 12