

# ADAM-5056S/5056SO

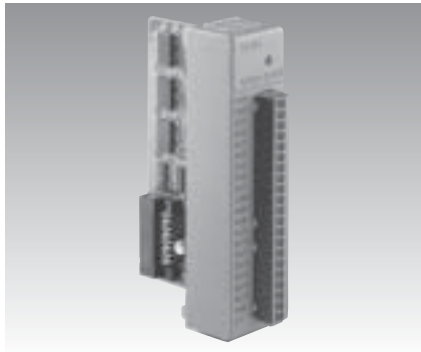
# ADAM-5060/5068

# ADAM-5069

16-channel Sink / Source Type  
Isolated Digital Output Module with LED

6/8-channel Relay Output Module

8-channel Power Relay Output Module  
with LED



ADAM-5056S  
ADAM-5056SO

CE

## Specifications

### General

- **Certifications** CE  
FCC (5056SO only)
- **Connectors** 1 x Plug-in screw terminal (# 14–28 AWG)
- **LED Indicator** On: active  
Off: inactive
- **Power Consumption** 0.6 W (typical)

### Digital Output

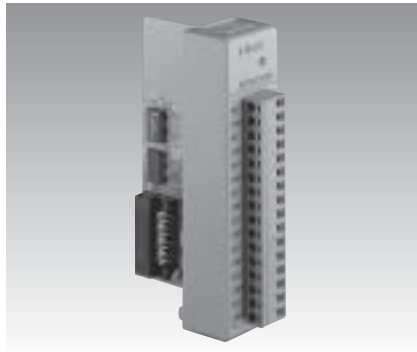
- **Channels** 16
- **Digital Output** Open collector to 40 V,  
200 mA max. load  
5056S (sink)  
5056SO (source)

### Protection

- **Optical Isolation** 2500 V<sub>DC</sub>
- **Oversvoltage Protection** 70 V<sub>DC</sub>

## Ordering Information

- **ADAM-5056S** 16-channel Sink Type Isolated Digital Output Module with LED
- **ADAM-5056SO** 16-channel Source Type Isolated Digital Output Module with LED



ADAM-5060  
ADAM-5068

CE

## Specifications

### General

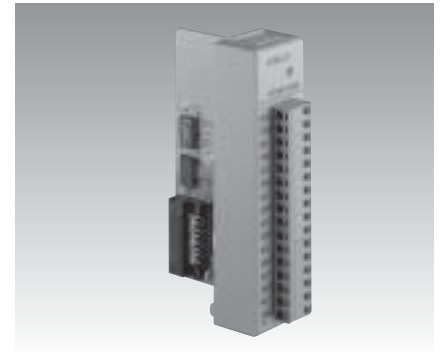
- **Certifications** CE  
FM (ADAM-5060 only)
- **Connectors** 1 x Plug-in screw terminal (# 14–22 AWG)
- **Power Consumption** ADAM-5060: 0.7 W (typical); 1.8 W (max.)  
ADAM-5068: 0.25 W (typical); 1.8 W (max.)

### Relay Output

- **Breakdown Voltage** 500 V<sub>AC</sub> (50/60 Hz)
- **Channels** ADAM-5060:  
2 x form A, 4 x form C  
ADAM-5068: 8 x form A
- **Contact Rating** ADAM-5060:  
AC: 125 V @ 0.6 A  
250 V @ 0.3 A  
DC: 30 V @ 2 A  
110 V @ 0.6 A  
ADAM-5068:  
AC: 120 V @ 0.5 A  
DC: 30 V @ 1 A
- **Insulation Resistance** 1 GΩ min. @ 500 V<sub>DC</sub>
- **Relay Off Time (typical)** ADAM-5060: 2 ms  
ADAM-5068: 3 ms
- **Relay On Time (typical)** ADAM-5060: 3 ms  
ADAM-5068: 7 ms
- **Total Switching Time** 10 ms

## Ordering Information

- **ADAM-5060** 6-channel Relay Output Module
- **ADAM-5068** 8-channel Relay Output Module



ADAM-5069

CE FCC

## Specifications

### General

- **Certifications** CE, FCC class A
- **Connectors** 1 x Plug-in screw terminal (# 14–22 AWG)
- **LED Indicator** On: Active  
Off: Non-active
- **Power Consumption** 0.25 W (typical);  
2.2 W (max.)

### Relay Output

- **Breakdown Voltage** 750 V<sub>AC</sub> (50/60 Hz)
- **Channels** 8 x form A
- **Contact Rating** AC: 250 V @ 5 A  
DC: 30 V @ 5 A
- **Insulation Resistance** 1 GΩ @ 500 V<sub>DC</sub>
- **Relay On Time** 5 ms
- **Relay Off Time** 5.6 ms

## Ordering Information

- **ADAM-5069** 8-channel Power Relay Output Module with LED