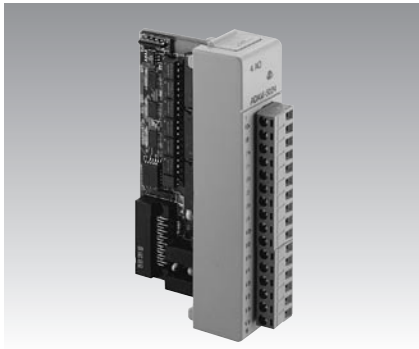
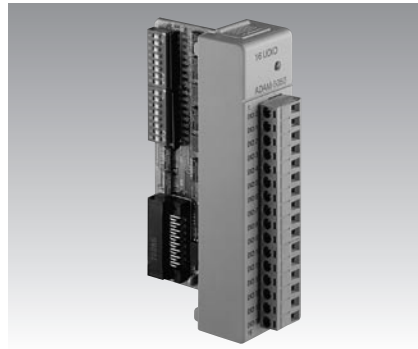


# ADAM-5024 ADAM-5050 ADAM-5051/5051D/5051S

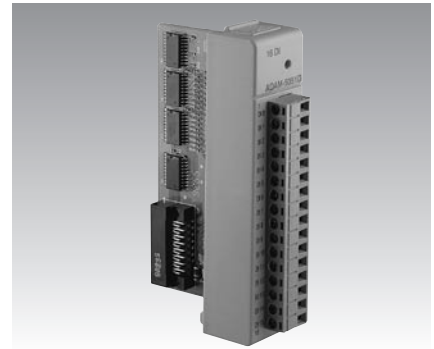
4-ch Analog Output  
Module  
16-ch Universal Digital  
I/O Module  
16-ch Digital Input  
Modules



ADAM-5024



ADAM-5050



ADAM-5051  
ADAM-5051D  
ADAM-5051S



## Specifications

### General

- **Certifications** CE, FM
- **Connectors** 1 x Plug-in screw terminal (# 14 ~ 22 AWG)
- **Power Consumption** 2.9 W (max.)

### Analog Output

- **Accuracy**  $\pm 0.1\%$  of FSR for current output  
 $\pm 0.2\%$  of FSR for voltage output
- **Channels** 4
- **Current Load Resistor** 0 ~ 500  $\Omega$  (source)
- **Output Type** mA, V
- **Output Range** 0 ~ 20 mA, 4 ~ 20 mA, 0 ~ 10 V
- **Programmable Output Slope** 0.125 ~ 128.0 mA/sec.  
0.0625 ~ 64.0 V/sec.
- **Resolution** 12-bit
- **Resolution**  $\pm 0.015\%$  of FSR
- **Span Temperature Coefficient**  $\pm 25$  PPM/ $^{\circ}$ C
- **Zero Drift** Voltage:  $\pm 30$   $\mu$ V/ $^{\circ}$ C  
Current:  $\pm 0.2$   $\mu$ A/ $^{\circ}$ C

### Protection

- **Isolation Voltage** 3,000 V<sub>DC</sub>

## Ordering Information

- **ADAM-5024** 4-ch Analog Output Module

## Specifications

### General

- **Certifications** CE, FM
- **Connectors** 1 x Plug-in screw terminal (# 14 ~ 22 AWG)
- **Power Consumption** 1.2 W (max.)

### Digital I/O

- **Channels** 16
- **Channel I/O Type** Bit-wise selectable by DIP switch
- **Digital Input** Dry Contact:  
Logic level 0: close to GND  
Logic level 1: open  
Wet Contact:  
Logic level 0: 2 V max.  
Logic level 1: 4 ~ 30 V
- **Digital Output** Open collector to 30 V, 100 mA and 450 mW max. load
- **Power Dissipation** 300 mW for each channel

## Ordering Information

- **ADAM-5050** 16-ch Universal Digital Input/Output Module

## Specifications

### General

- **Certifications** CE
- **Connectors** ADAM-5051/5051D: 1 x Plug-in screw terminal (# 14 ~ 22 AWG)  
ADAM-5051S: 1 x Plug-in screw terminal (# 14 ~ 28 AWG)

### LED Indicators

- ADAM-5051D On: Input logic level 1  
Input floating  
Off: Input logic level 0
- ADAM-5051S On: Active  
Off: Inactive

### Power Consumption

- ADAM-5051: 0.53 W (max.)
- ADAM-5051D: 0.84 W (max.)
- ADAM-5051S: 0.8 W (max.)

### Digital Input

- **Circuit Type** Pull-up current: 0.5 mA (Source Type) -only for ADAM-5051/5051D
- **Channels** 16
- **Input Voltage** ADAM-5051/5051D: 30 V<sub>max</sub>  
ADAM-5051S: 50 V<sub>max</sub>
- **Logic Level** ADAM-5051/5051D Logic level 0: 1 V max.  
Logic level 1: 3.5 ~ 30 V  
ADAM-5051S Logic level 0: 3 V max.  
Logic level 1: 10 ~ 50 V
- **Protection (Only for ADAM-5051S)**
- **Optical Isolation** 2500 V<sub>DC</sub>
- **Overvoltage Protection** 70 V<sub>DC</sub>

## Ordering Information

- **ADAM-5051** 16-ch Digital Input Module
- **ADAM-5051D** 16-ch Digital Input Module with LED
- **ADAM-5051S** 16-ch Isolated Digital Input Module w/LED