

# ADAM-3951

## Wiring Terminal Module with LED indicators for DIN-rail Mounting



### Features

- Low-cost DIN-rail mounting wiring terminal module for PCI-1752/1754/1756 with SCSI-II 50-pin female connector.
- Screw-clamp terminal blocks allow easy and reliable connections.
- Each LED indicates its current bi-directional I/O logic status with either green or red light.

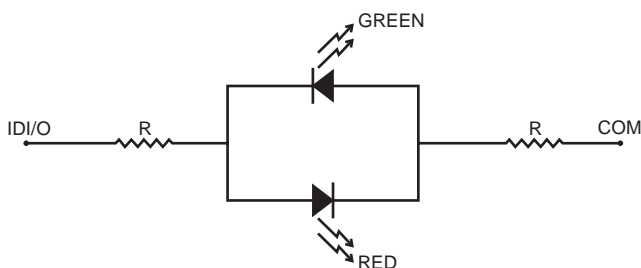
### Introduction

The ADAM-3951 is a SCSI-II 50-pin wiring terminal module with LED indicators for DIN-rail mounting. This terminal module can be readily connected to the Advantech PC-Lab cards and allow easy yet reliable access to individual pin connections for the PCI-1752/1754/1756 card.

### Specifications

- I/O channels: 32
- I/O range: 0 ~ 50 V<sub>DC</sub>
- Screw terminals: Accept #22 to #12 AWG wires
- Connector: SCSI-II 50-pin female connector
- Dimensions: 77.5 mm (W) X 179.5 mm (L) X 41.5 mm (H)  
(3.1" X 7.1" X 1.6")

### LED indicator circuit



### Pin Assignments

SCSI-II 50-pin Connector				TB1		TB2	
IDI/O 00	1	26	IDI/O 01	1	IDI/O 00	26	IDI/O 16
IDI/O 02	2	27	IDI/O 03	2	IDI/O 01	27	IDI/O 17
IDI/O 04	3	28	IDI/O 05	3	IDI/O 02	28	IDI/O 18
IDI/O 06	4	29	IDI/O 07	4	IDI/O 03	29	IDI/O 19
IDI/O 08	5	30	IDI/O 09	5	IDI/O 04	30	IDI/O 20
IDI/O 10	6	31	IDI/O 11	6	IDI/O 05	31	IDI/O 21
IDI/O 12	7	32	IDI/O 13	7	IDI/O 06	32	IDI/O 22
IDI/O 14	8	33	IDI/O 15	8	IDI/O 07	33	IDI/O 23
COM0	9	34	COM0	9	IDI/O 08	34	IDI/O 24
COM0	10	35	COM0	10	IDI/O 09	35	IDI/O 25
IGND*	11	36	IGND*	11	IDI/O 10	36	IDI/O 26
IGND*	12	37	IGND*	12	IDI/O 11	37	IDI/O 27
IDI/O 16	13	38	IDI/O 17	13	IDI/O 12	38	IDI/O 28
IDI/O 18	14	39	IDI/O 19	14	IDI/O 13	39	IDI/O 29
IDI/O 20	15	40	IDI/O 21	15	IDI/O 14	40	IDI/O 30
IDI/O 22	16	41	IDI/O 23	16	IDI/O 15	41	IDI/O 31
IDI/O 24	17	42	IDI/O 25	17	COM0	42	COM1
IDI/O 26	18	43	IDI/O 27	18	COM0	43	COM1
IDI/O 28	19	44	IDI/O 29	19	COM0	44	COM1
IDI/O 30	20	45	IDI/O 31	20	COM0	45	COM1
COM1	21	46	COM1	21	IGND*	46	IGND*
COM1	22	47	COM1	22	IGND*	47	IGND*
IGND*	23	48	IGND*	23	IGND*	48	IGND*
IGND*	24	49	IGND*	24	IGND*	49	IGND*
CH_FRZ_IN*	25	50	CH_FRZ_COM*	25	CH_FRZ_IN*	50	CH_FRZ_COM*

\*: The pins defined for PCI-1752/1756

### Ordering Information

- ADAM-3951: Wiring terminal module with LED indicators for DIN-rail mounting
- PCL-10250: 100-pin SCSI to two 50-pin SCSI cable, 1m
- PCI-1752: 64-channel isolated digital output card
- PCI-1754: 64-channel isolated digital input card
- PCI-1756: 64-channel isolated digital I/O card