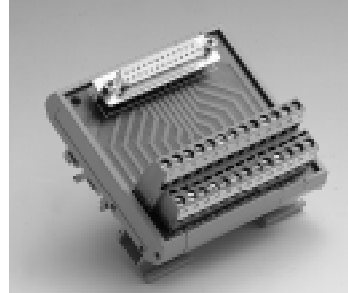


### Introduction

The ADAM-3900 series consists of universal screw terminal modules designed for field signal wiring in industrial applications. They can be connected to the analog and digital ports of Advantech products such as the PCL series.



**ADAM-3909**  
DB-9 Wiring  
Terminal for  
DIN-rail Mounting



**ADAM-3925**  
DB-25 Wiring  
Terminal for  
DIN-rail Mounting

### Features

- Low cost universal DIN-rail mounting screw terminal module for PC-LabCards with DB-9 connector
- Screw-clamp terminal blocks allow easy and reliable connections
- Case dimensions: 77.5 mm (W) x 45 mm (L) x 51 mm (H) (3.1" x 1.8" x 2.0")

#### To Be Used With:

PCL-728, PCL-740, PCL-741, PCL-743B, PCL-745B,  
PCL-832

### Features

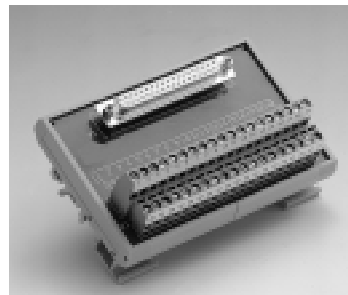
- Low cost universal DIN-rail mounting screw terminal module for PC-LabCards with DB-25 connector
- Screw-clamp terminal blocks allow easy and reliable connections
- Case dimensions: 77.5 mm (W) x 56.3 mm (L) x 51 mm (H) (3.1" x 2.2" x 2.0")

#### To Be Used With:

PCL-725, PCL-740, PCL-746+, PCL-833



**ADAM-3920**  
20-pin Flat Cable  
Wiring Terminal  
for DIN-rail  
Mounting



**ADAM-3937**  
DB-37 Wiring  
Terminal for  
DIN-rail Mounting

### Features

- Low cost universal DIN-rail mounting screw terminal module for PC-LabCards with 20-pin connector
- Screw-clamp terminal blocks allow easy and reliable connections
- Case Dimensions: 77.5 mm (W) x 67.5 mm (L) x 51 mm (H) (3.1" x 2.7" x 2.0")

#### To Be Used With:

PCL-711B, PCL-812PG, PCL-818 series, PCL-1800,  
PCL-816, PCL-720, PCL-730, PCL-836, PCL-727,  
PCL-726

### Features

- Low cost universal DIN-rail mounting screw terminal module for PC-LabCards with DB-37 connector
- Screw-clamp terminal blocks allow easy and reliable connections
- Case dimensions: 77.5 mm (W) x 112.5 mm (L) x 51 mm (H) (3.1" x 4.4" x 2.0")

#### To Be Used With:

PCL-818L, PCL-813B, PCL-818HD, PCL-818HG, PCL-1800,  
PCL-816, PCL-727, PCI-1750, PCI-1713, PCI-1720, PCI-1760