

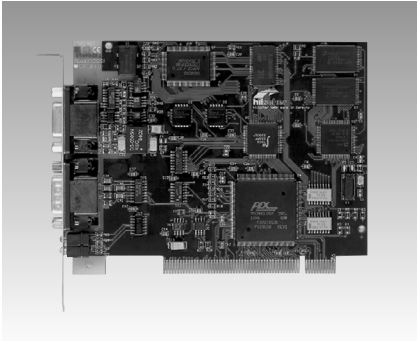
# AD-CIF50-PB AD-CIF104-PB AD-CIF104-DPS AD-CIF104P-PB

PROFIBUS™ DP/FMS Master PCI Communication Card

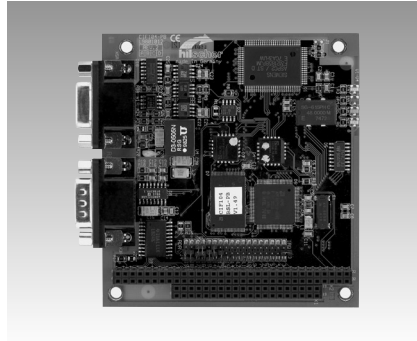
PROFIBUS™ DP/FMS Master PC/104 Module

PROFIBUS™ DP Slave PC/104 Module

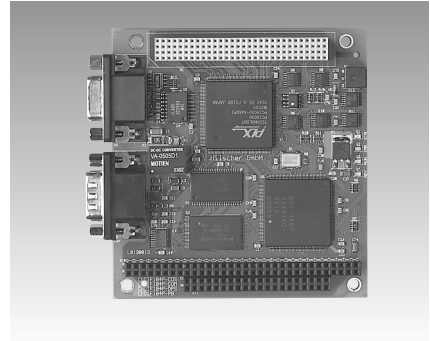
PROFIBUS™ DP/FMS Master PC/104-plus Module



AD-CIF50-PB



AD-CIF104-PB, AD-CIF104-DPS



AD-CIF104P-PB



## Specifications

### Bus Interface

- Interface PCI
- Dual-port Memory 8 KB
- Interrupt 3-7, 9-12, 14, 15 via Plug & Play

### PROFIBUS Interface

- Interface EN 50170
- Transmission Rate 9.6 kBaud to 12 MBaud
- Connector ASPC2
- Interface RS485, optically isolated
- Connector DSub-female connector 9-pin

### Diagnostic Interface

- Interface RS232C, non-isolated
- Connector DSub-male connector 9-pin

### General

- Display RDY, RUN, STA, ERR
- Operating Voltage 5 V ±5%/650 mA
- Operating Temperature 0 ~ 55° C (32 ~ 131° F)
- Dimensions (L x W x H) 134 x 107 x 20 mm (5.3" x 4.2" x 0.8")
- Weight 130 g
- Software C functions library: DRV-TKIT  
COM interface: DRV-COM  
Device driver Windows: DRV-WIN  
Device driver Linux: DRV-LNX  
Documentation on CD: CD-SYS  
Basic version System Configurator

## Ordering Information

- AD-CIF50-PB Communication Interface PCI PROFIBUS-DP/FMS-Master Card

## Specifications

- Card Format PC/104

### Bus Interface

- Interface ISA
- Dual-port Memory 8 KB
- Interrupt 3-7, 9-12, 14, 15

### PROFIBUS interface

- Interface EN 50170
- Transmission Rate 9.6 kBaud to 12 MBaud
- Controller ASPC2
- Interface RS485, optically isolated
- Connector DSub-female 9-pin

### Diagnostic Interface

- Interface RS232C, non-isolated
- Connector DSub-male 9-pin

### General

- Display RDY, RUN, STA, ERR
- Operating Voltage +5 V ±5%/650 mA
- Operating Temperature 0 ~ 55° C (32 ~ 131° F)
- Dimensions (L x W x H) 90 x 96 x 25 mm (3.5" x 3.7" x 1")
- Weight 120 g
- Software C functions library: DRV-TKIT  
COM interface: DRV-COM  
Device driver Windows: DRV-WIN  
Device driver Linux: DRV-LNX  
Documentation on CD: CD-SYS  
Basic version System Configurator

## Ordering Information

- AD-CIF104-PB PROFIBUS-DP/FMS-Master PC/104 Module with left DSub 9-pin connector
- AD-CIF104-DPS PROFIBUS-DP-Slave PC/104 Module with left DSub 9-pin connector

## Specifications

- Card Format PC/104-Plus

### Bus Interface

- Interface PCI
- Dual-port Memory 8 KB
- Interrupt Plug & Play

### PROFIBUS interface

- Interface EN 50170
- Transmission Rate 9.6 kBaud to 12 MBaud
- Controller EC1
- Interface RS485, optically isolated
- Connector DSub-female 9-pin

### Diagnostic Interface

- Interface RS232C, non-isolated
- Connector DSub-male 9-pin

### General

- Display RDY, RUN, STA, ERR
- Operating Voltage +5 V ±5%/50 mA, +3.3 V ±5% < 400 mA
- Operating Temperature 0 ~ 55° C (32 ~ 131° F)
- Dimensions (L x W x H) 90 x 96 x 25 mm (3.5" x 3.7" x 1")
- Weight 120 g
- Software C functions library: DRV-TKIT  
COM interface: DRV-COM  
Device driver Windows: DRV-WIN  
Device driver Linux: DRV-LNX  
Documentation on CD: CD-SYS  
Basic version System Configurator

## Ordering Information

- AD-CIF104P-PB PROFIBUS-DP/FMS-Master PC/104-Plus Module with left DSub 9-pin connector

1

Software

2

IPPC

3

TPC

4

FPM

5

ATM & AWS

6

DA&C

7

cPCI

8

ADAM-3000

9

Motion Control

10

ICOM

11

eConnectivity

12

UNO

13

ADAM-4000

14

ADAM-5000

15

ADAM-6000

16

ADAM-8000

17

BAS